

ALLDAY
& MILLER



Warley Road, Hayes, UB4 0PZ
£560,000

4 2 1 D



Warley Road, Hayes, UB4 0PZ

£560,000

- Corner Plot
- Large Driveway
- Chain Free
- Great Transport Links
- Walking Distance To Shops
- Potential To Extend STPP
- Outbuilding
- Popular Location
- Rear Garden With Outbuilding
- Freehold

Description

Perfect for the growing family or investors alike, this four bedroom home situated on a corner plot with further potential to extend (STPP).

This semi detached property in the heart of North Hayes comprises of an inviting entrance hallway, a spacious reception/ dining room giving access to the rear garden, a fully fitted kitchen with a utility room perfect for extra storage space and a downstairs double bedroom. Completing the ground floor with a WC and shower room.

To the first floor you have three bedrooms, two doubles with fitted wardrobes and a smaller third room. A family bathroom suite also on this floor.

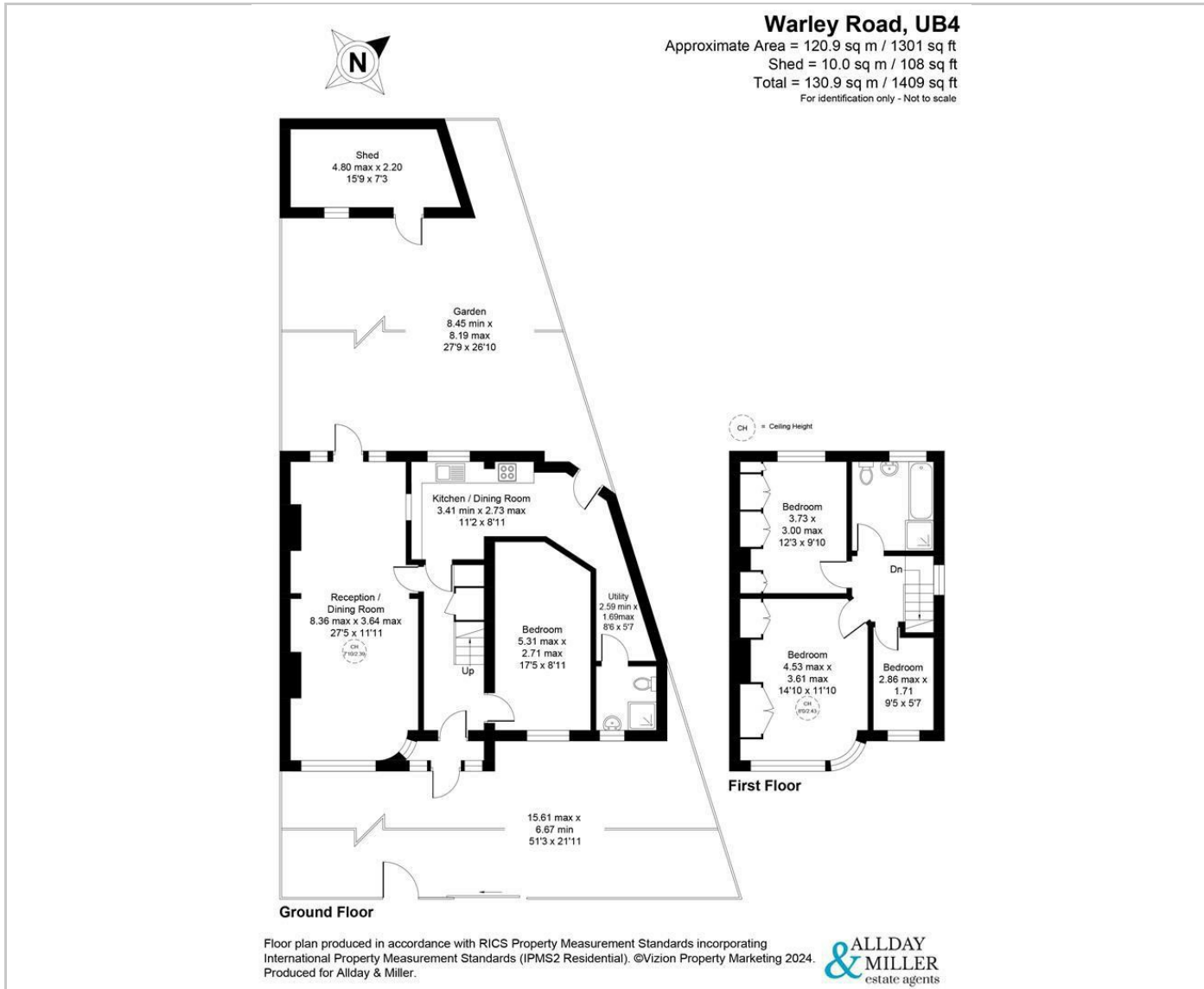
The front has a large driveway benefiting from off street parking for multiple vehicles. To the rear a private garden with an outbuilding measuring 15'9 X 7'3.

Situation

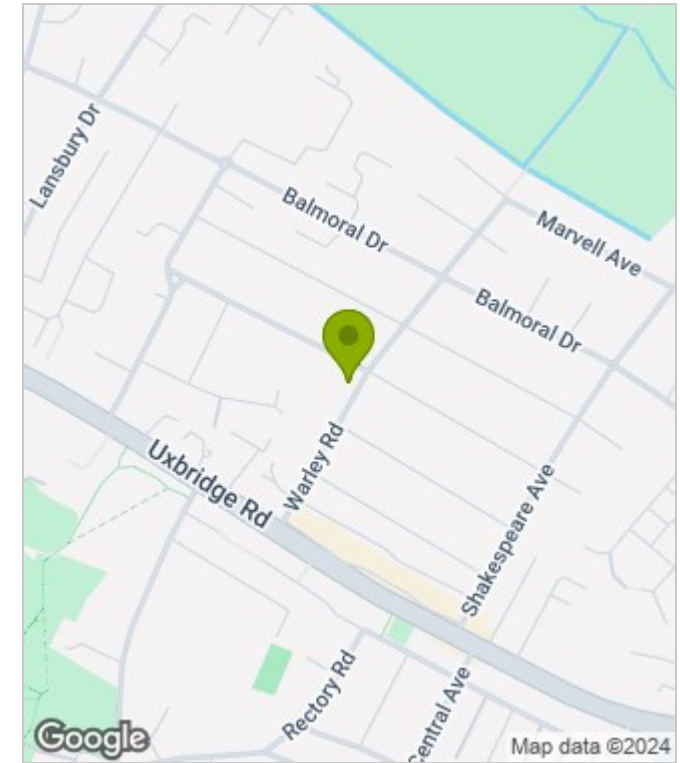
Warley Road with its easy access to a number of local amenities including the Uxbridge Road with its variety of shops, cafes and restaurants. A number of highly regarded schools including Hayes Park and road links with the M4/M25 and the A40 all within a short drive. Hayes and Harlington station being just a 10 minute drive with the Elizabeth Line giving easy links to Central London.



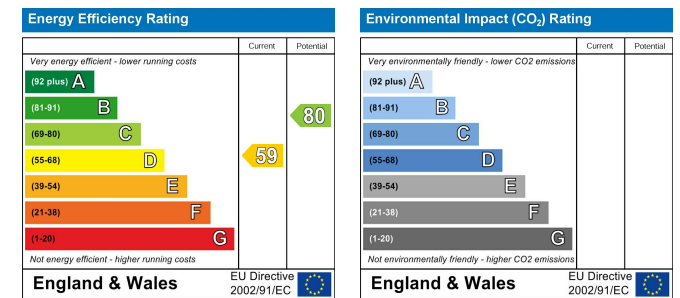
Floor Plans



Area Map



Energy Performance Graph



These particulars, whilst believed to be accurate are set out as a general outline only for guidance and do not constitute any part of an offer or contract. Intending purchasers should not rely on them as statements of representation of fact, but must satisfy themselves by inspection or otherwise as to their accuracy. No person in this firm's employment has the authority to make or give any representation or warranty in respect of the property.